

# Vibrac®

## Torque Test Systems

*Leading the way with innovative Torque Test Systems  
for vertical and horizontal applications!*



# Test-All II

Precision Testing of Any Rotary Device

Vibrac LLC, 16 Columbia Drive, Amherst, NH 03031 USA  
Tel: 603-882-6777 ■ Fax: 603-886-3857 ■ Web: [www.vibrac.com](http://www.vibrac.com) ■ E-mail: [sales@vibrac.com](mailto:sales@vibrac.com)

# Vibrac®

## Quality Engineered Solutions for Production Testing

**A**s the industry leader in the precision torque test equipment market, Vibrac continues to develop advanced technological solutions to industrial testing problems. Over forty-five years of experience in the field of torque measurement has resulted in the development of this patented digital measuring system.

### Torque Testing... Made Easy!

The new Test-All II, with a windows-based control software, and touch screen display and interface, torque testing is now simple, accurate and affordable. This compact system measures and stores test results at the touch of a button.

### Features

- ❖ Simple Touch Screen Programming
- ❖ Automatic testing and data logging
- ❖ Completely calibratable in the field
- ❖ NIST Traceable calibration
- ❖ Instant on; no warm-up period
- ❖ Wide operating temperature Range
- ❖ Mechanical overload protection
- ❖ RS 232 output port
- ❖ USB Data Upload/Download Port
- ❖ Full one-year warranty

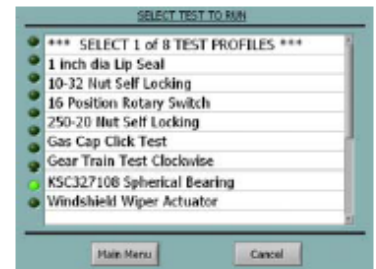
### Easily Selected Test Features

From a simple move test, to multi-cycle bi-directional tests, with a pretest run-in and naps to prevent over heating, the Test-All II does it all.



### Select a Profile From Memory

A library of tests can be easily created to make the operators job simple and efficient.



### Calibrate On-Site

On-screen instructions and pictures guide the user through the complete calibration process. Calibration has never been so easy!



### Built for the Factory Environment

This metal-housed unit with its abrasion-resistant finish can withstand the dust and liquid spills that occur during normal factory use. The display screen arm and housing are made using heavy gage aluminum to prevent damage from lifting, bumping and other common impact situations.

# ...Testing Made Friendly

Select a Test



Press Start



View Results



## Easy to Use Test-All II

The Model 1560 Test-All II is an Innovative, cost effective bench top system for measuring the torque characteristics of rotating devices. Easy to use programming features enable the user to tailor a test to the requirements of almost any application.

### Programming Features

#### ❖ Uni-directional Test

This test will rotate the DUT (Device Under Test) in the direction selected and the peak torque will be measured and displayed. The test results can then be saved in memory or outputted through the RS 232 port.

The test speed and the distance or time to test is programmable.

#### ❖ Bi-directional Test

This test will rotate the DUT in both directions and the peak torques will be measured and displayed. Both measured values will be displayed and can be stored in memory and outputted.

As in the single direction, the test speed and the distance or time to test is programmable.

#### ❖ Set Torque Test

This test will rotate the DUT in the direction selected until the set torque is achieved or the torque drops off suddenly. If the desired torque is not reached the drop off value will be captured and displayed. Once again the results can be stored or outputted.

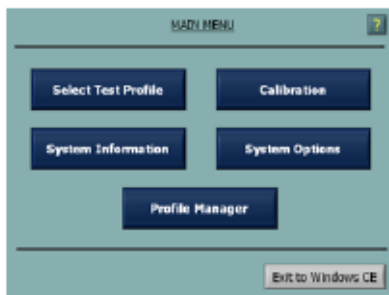
This test can be performed in either or both directions and at a programmable speed.

#### ❖ Multi-Tests

The tests described above can be performed a programmable number of times, with naps between tests, to life test a device.

# ...Easy To Program

## Main Menu



## Profile Manager



## Enter a Profile Name



## Creating the Right Test

The Model 1560 Test-All II can be easily programmed to perform the required test by just following the steps that are displayed on the screens.

Tests on this system are called PROFILES and they are all initiated from the Profile Manager Screen.

## Creating a Test Profile

All programming begins from a selection on the main menu.

Then to create a profile, PROFILE MANAGER must be selected.

Now the TEST TYPE must be selected on the profile manager screen.

Selecting MOVE or SET TORQUE will display the programming screen for this test type.

Now enter a name for the new profile.