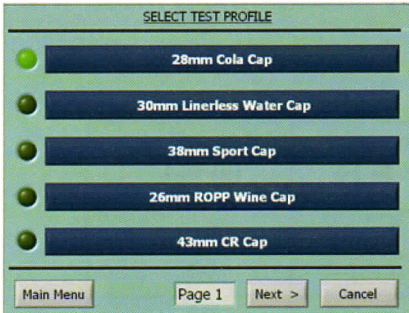
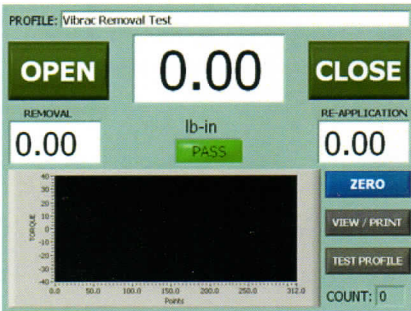


... Testing Made Friendly

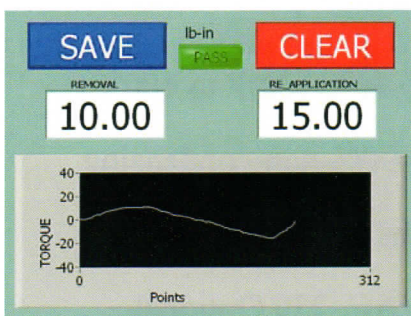
Select a Test



Press Open



View Results

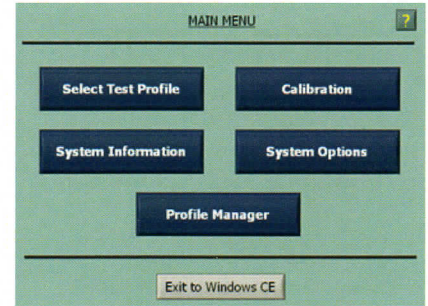


Easy to Use Torquo II

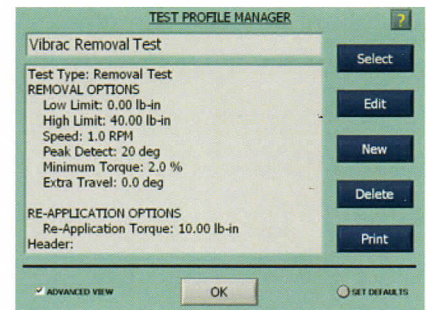
The Touch Screen display, with user-friendly menus, enables the user to become proficient in just a few hours of use.

Test profiles are easily created

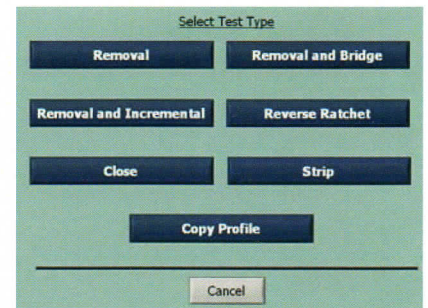
On the Main Menu select Profile Manager.



On the Profile Manager Menu select New.



On the Test Type Menu select the desired Test Type.



Now Give it a name.



It's that easy!

...Testing Flexibility

Model 1590 Torqo II Series

The Model 1590 Torqo II is an innovative, cost effective bench top tool for accurately measuring the torque required to remove or install twist off bottle caps.

General Specifications

The torque ranges and accuracies included in the following table are all inclusive. That is any measurement made will be within .5% of specification.

MDL #	Max. Torque (lb-in.)	Accuracy +/- % FS	Resolution (lb-in.)
1590-10	10	.5	.01
1590-20	20	.5	.02
1590-30	30	.5	.03
1590-40	40	.5	.04
1590-50	50	.5	.05
1590-70	70	.5	.07
1590-100	100	.5	.1
1590-200	200	.5	.2

Selecting The Correct Range

A model should be selected on the basis of having most of the testing performed in the mid-range of the device. (i.e. between 25% and 75% of the torque capacity). This will result in the greatest accuracy and repeatability of the measurements.

Technical Specifications

Operating environment: 0°C to 40°C (32°F to 100°F)

Humidity Range: Up to 90% non-condensing

Weight: 115 Lbs (less tooling)

Input power: 110 VAC, 220 Optional

Dimensions: 24" wide, 20" deep, 36" high