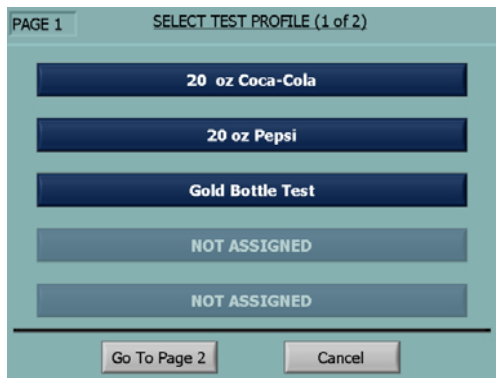


## How Easy is the Torqo II?

### Select a Product to Test



### Touch "Open"



### View the Test Data & Curve



## General Specifications

The torque ranges and accuracies displayed in the following table are all inclusive. Testing can be destructive or non-destructive, depending on the cap and bottle design.

The resolution of all models is 0.1%.

Model No.	Max Torque (lb-in)	Accuracy +/- % FS
1590-10	10	0.5
1590-20	20	0.5
1590-30	30	0.5
1590-40	40	0.5
1590-50	50	0.5
1590-100	100	0.5
1590-200	200	0.5

## Operating Environment

Temperature Range: 32°F to 100°F  
0°C to 40°C

Humidity Range: Up to 90%  
(non-condensing)

System Weight: 125 lbs / 57 kg

# Torqo® II



# Vibrac®

16 Columbia Drive, Amherst, NH 03031 USA  
Tel: 603.882.6777 Web: [www.vibrac.com](http://www.vibrac.com)  
E-mail: [sales@vibrac.com](mailto:sales@vibrac.com)

## Vibrac

With almost 50 years of experience and a commitment to excellence, Vibrac has established itself as the worldwide leader in the manufacture of Torque Test Equipment for both production and laboratory applications.

## Introduction

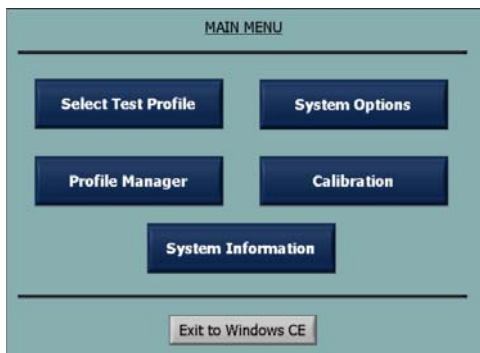
The **Torqo II** combines the features of the 15-year-old, factory floor proven Torqo with the latest in HMI (Human Machine Interface) technology to bring **cap torque testing** to a new level of accuracy and simplicity.

## Torqo II Features

- ❖ Compact Size
- ❖ Windows CE Based Software
- ❖ Touch Screen and Mouse Control
- ❖ Constant Speed Drive
- ❖ NIST Traceable Calibration

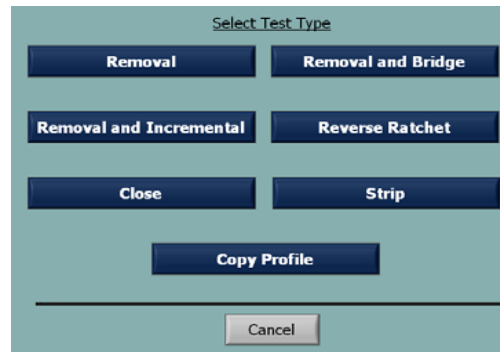
## Program Features

The Main Menu displays all of the Torqo II features with programming lock-out capability.



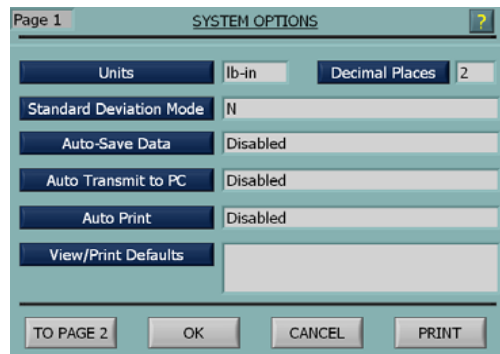
## Select a Test Type

Simply touch a button to select a test.



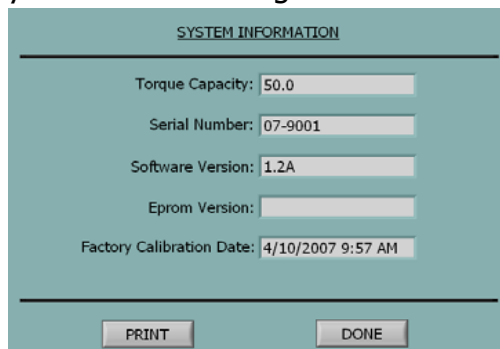
## System Options

Customize your program and select the special test features.



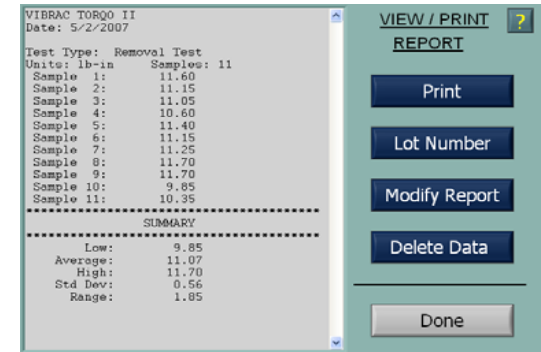
## System Information

Key information at-a-glance.



## Data Management

View and print data easily



## Using the Gold Bottle

Using the Gold Bottle for verification is quick & easy.



## Calibration in the Field

Simply follow a step-by-step procedure.

